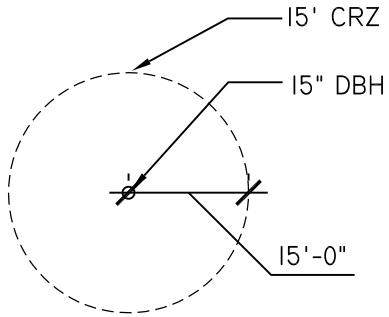
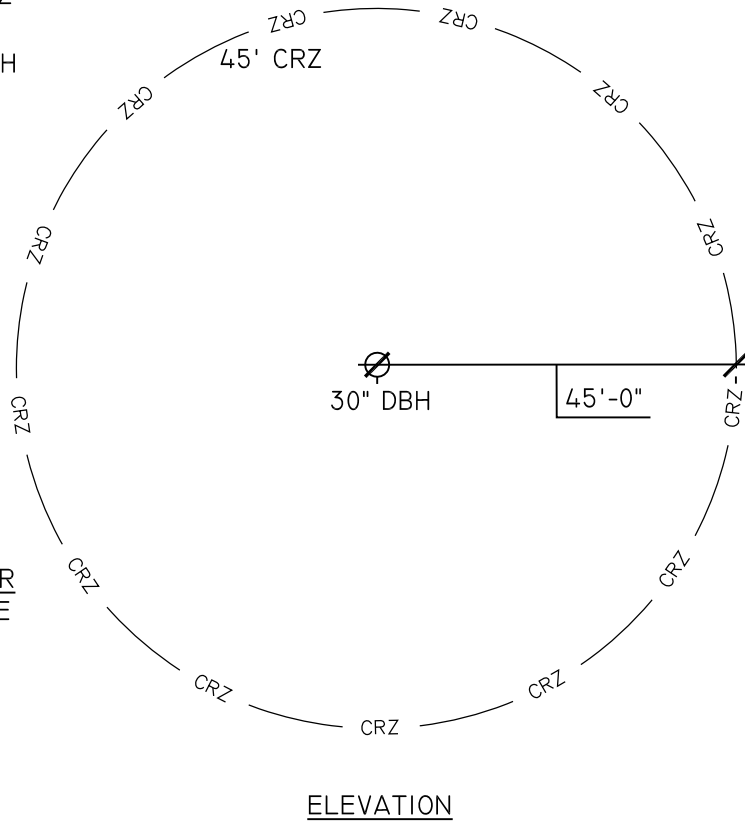


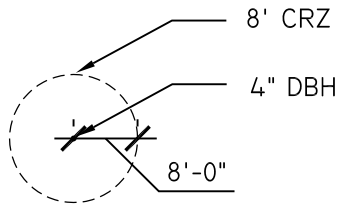
TREES 8.1-29.9" DBH
1" DBH = 1' CRZ RADIUS



TREES 30" DBH OR GREATER OR
TREES DESIGNATED AS SPECIMEN TREES
1" DBH = 1.5' CRZ RADIUS

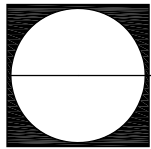


TREES 8" DBH AND SMALLER
8' CRZ RADIUS AROUND THE
TRUNK OF TREE



NOTES:

1. GRAPHICALLY, THE CRITICAL ROOT ZONE (CRZ) IS REPRESENTED AS A CIRCULAR REGION MEASURED OUTWARD FROM A TREE TRUNK REPRESENTING THE AREA OF ROOTS THAT MUST BE MAINTAINED OR PROTECTED FOR THE TREE'S SURVIVAL.
2. THE CRZ OF A TREE IS THE ZONE IN WHICH MOST OF THE MAJORITY OF THE ROOTS LAY. 95% OF THE ROOTS OF MOST TREES WILL BE FOUND IN THE UPPER 12-18" OF THE SOIL. MOST OF THE ROOTS THAT SUPPLY THE NUTRIENTS AND WATER TO THE TREE ARE FOUND JUST BELOW THE SOIL SURFACE. THE TOTAL AMOUNT OF A TREE'S ROOTS ARE GENERALLY PROPORTIONAL TO THE VOLUME OF THE TREE'S CANOPY. THEREFORE, IF THE ROOTS ONLY PENETRATE A THIN LAYER OF SOIL, THEN THE ROOTS MUST SPREAD FAR FROM THE TREE, BEYOND THE EXTENSION OF THE CANOPY.
3. PLOT ACCURATE TRUNK LOCATIONS OF ALL TREES GREATER THAN 3" DIAMETER AT BREAST HEIGHT (DBH) AND/OR TREE STANDS WITHIN DEVELOPMENT AREAS ON ALL PLANS FOR THE PROJECT AND DELINEATE THEIR ESTIMATED CRITICAL ROOT ZONE.
4. PLOT ACCURATE TRUNK LOCATIONS OF OFFSITE TREES WHICH WILL HAVE THEIR CRZ AFFECTED BY DEVELOPMENT AND DELINEATE THEIR ESTIMATED CRITICAL ROOT ZONE.



TREE PROTECTION DETAIL FOR DETERMINING CRITICAL ROOT ZONE

311300.3 (2016) (02231.3)

N.T.S.

